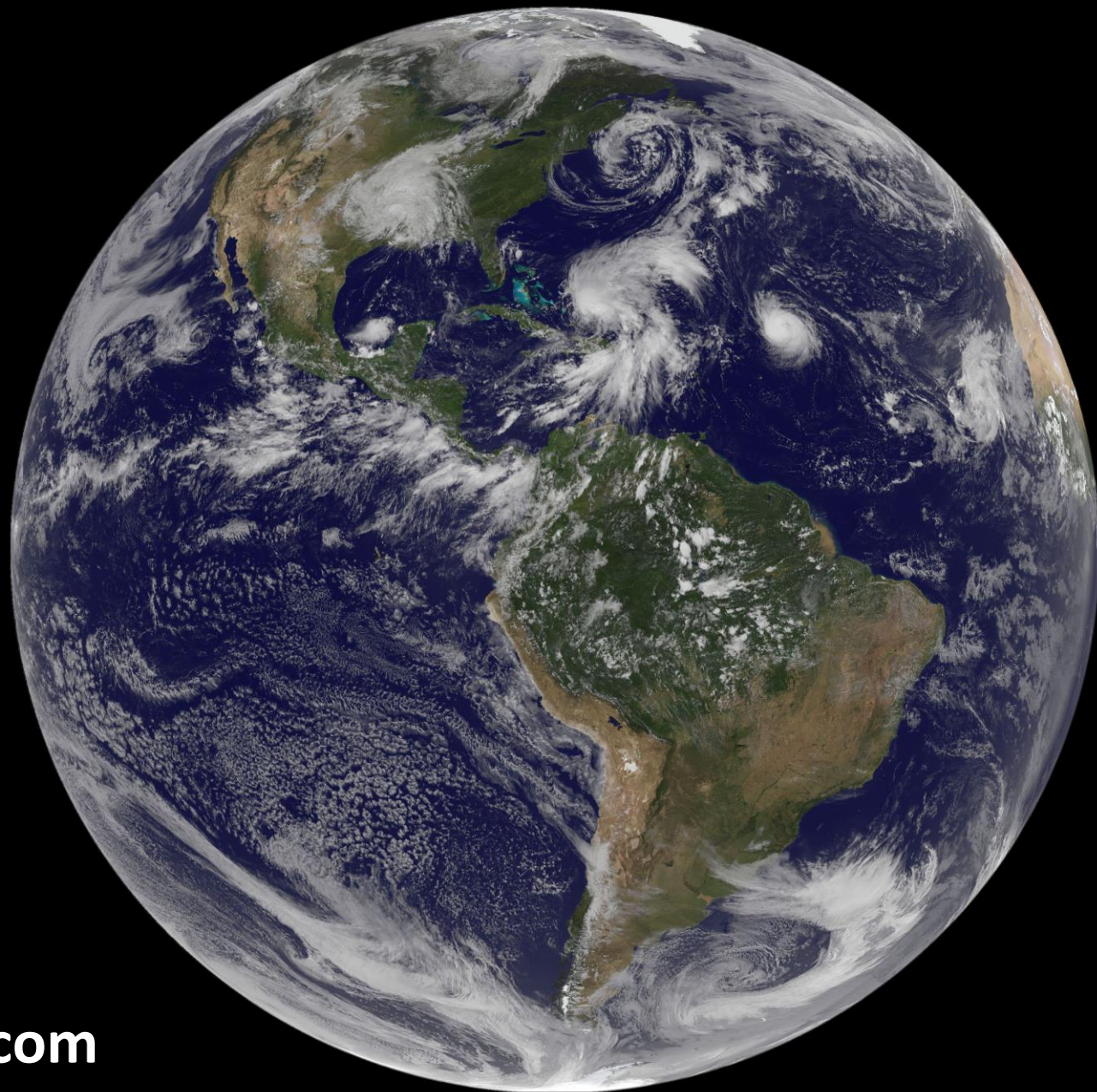


What kind of museum is possible in a Planetary Emergency?

Bridget McKenzie

aboutbridgetmckenzie.wordpress.com

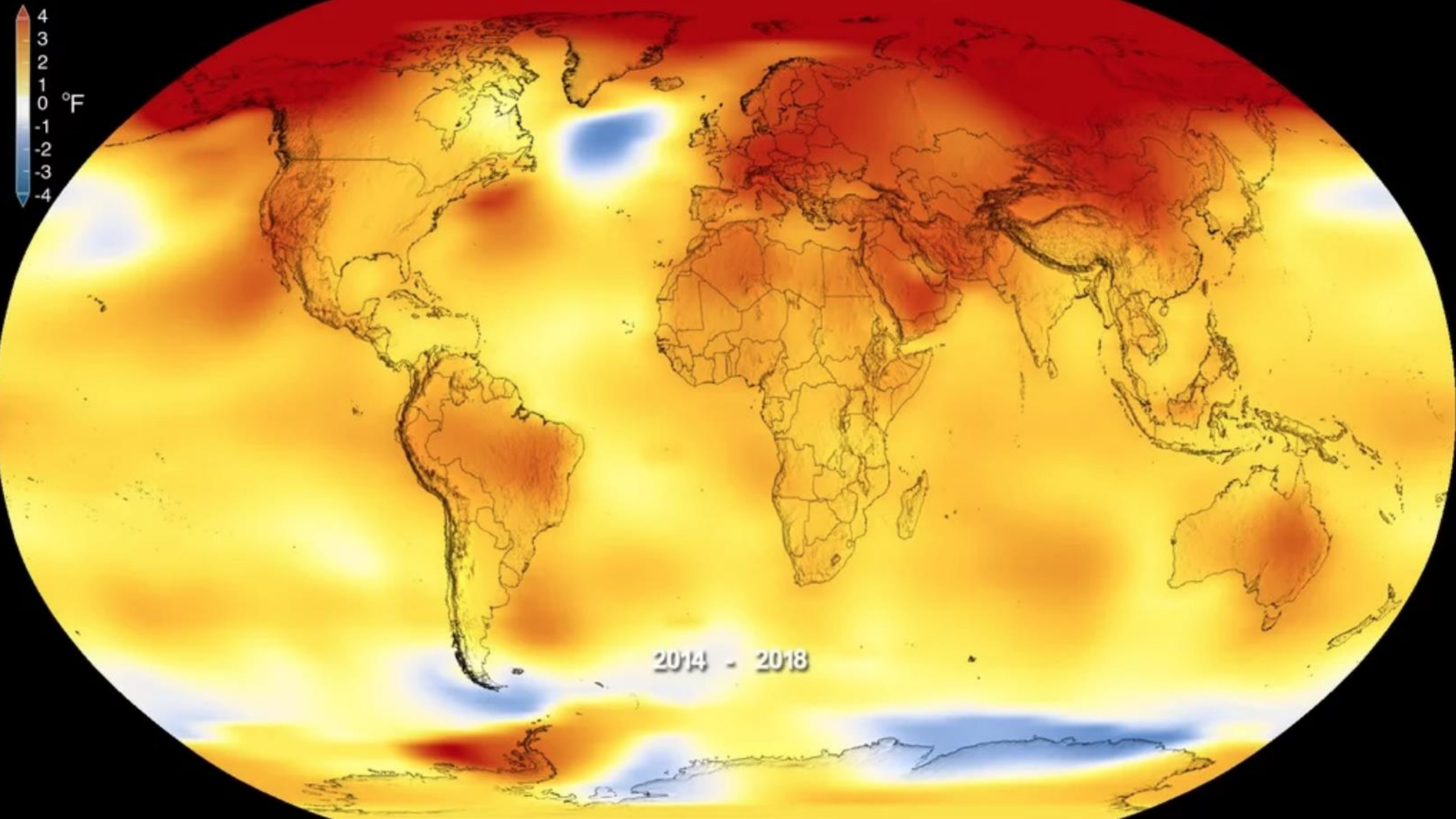


I hope to give you inspiration for tackling the Emergency

- Some frames for thinking
- Some movements in the cultural sector
- Some inspiring museums
- Climate Museum UK as an experiment
- Conclusion – ways to be a First Responder museum

Global temperatures over 170 years

showyourstripes.info





“Our house is on fire”

...so all the art, museums and heritage are on fire too.

What can culture do when the world is on fire?

Can it help to:

- alert us to danger?
- create a safer world?
- care for those affected?

We must act fast AND accept change is happening

- Mitigation
 - Adaptation
 - Reduce Suffering
& Seek Justice

CLIMATE EMERGENCY: **NEED** & **CHANCES** TO RESPOND OVER TIME

NEED + CHANCES

Need to mitigate
by tackling causes

Need to adapt
to impacts

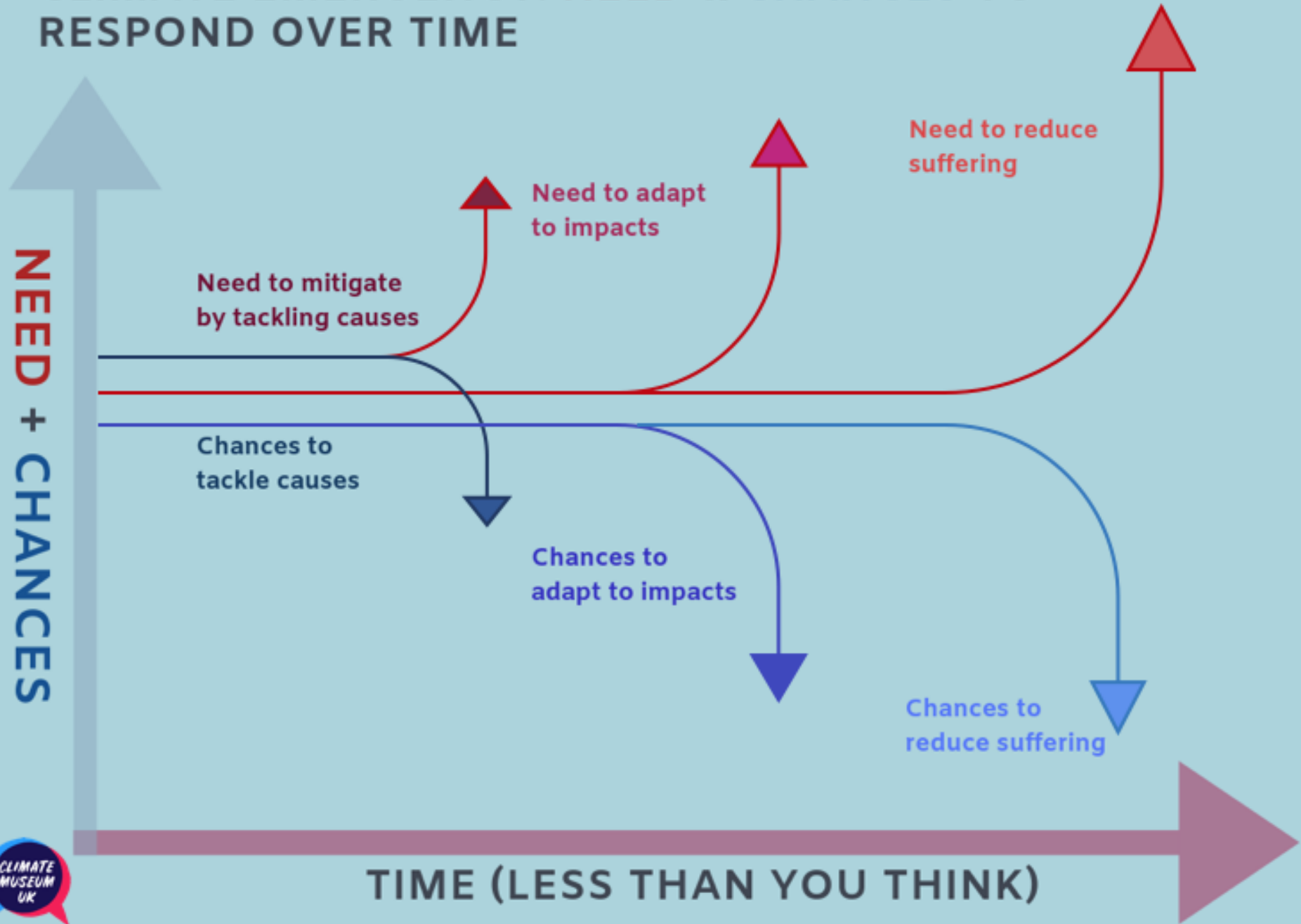
Need to reduce
suffering

Chances to
tackle causes

Chances to
adapt to impacts

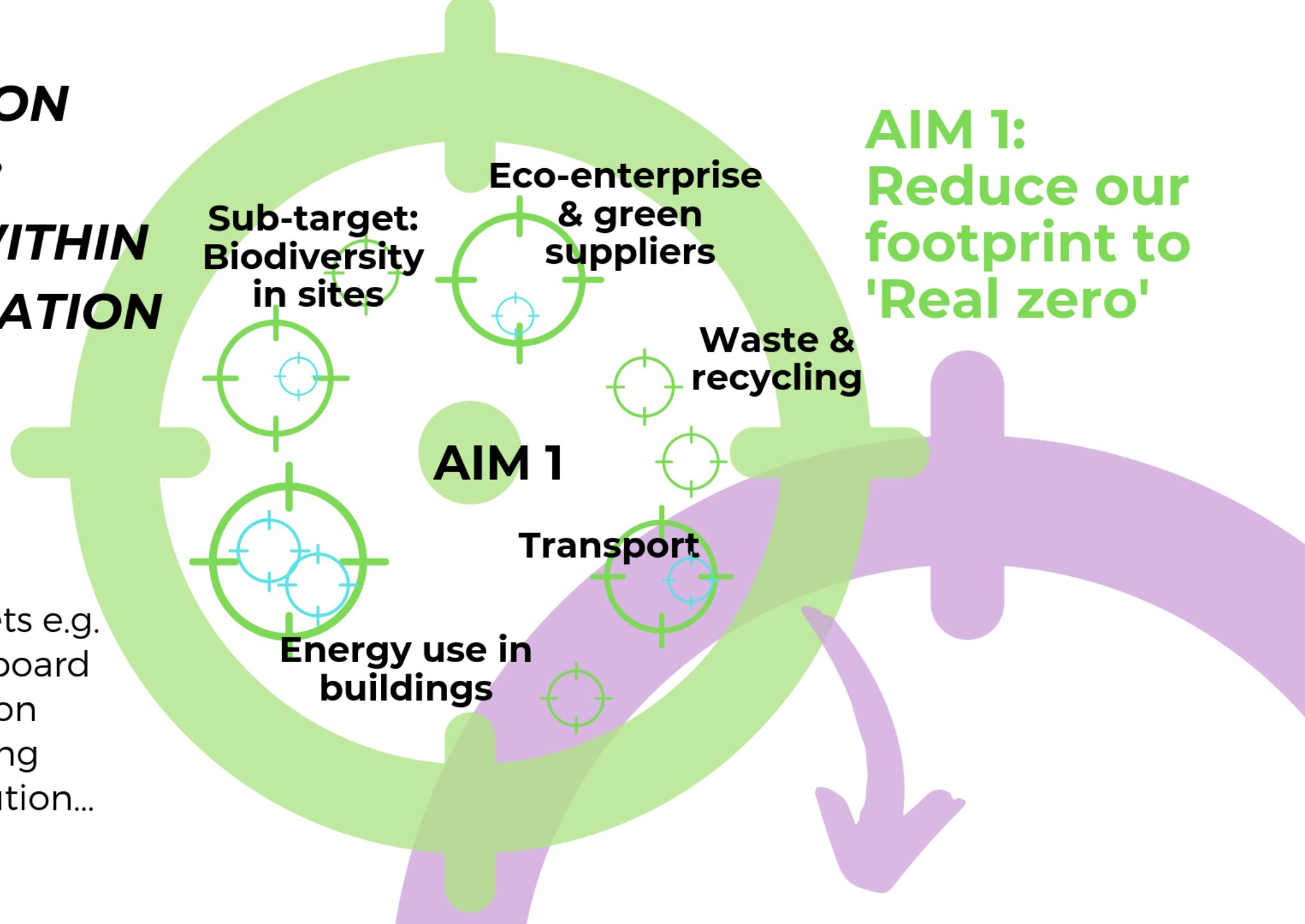
Chances to
reduce suffering

TIME (LESS THAN YOU THINK)



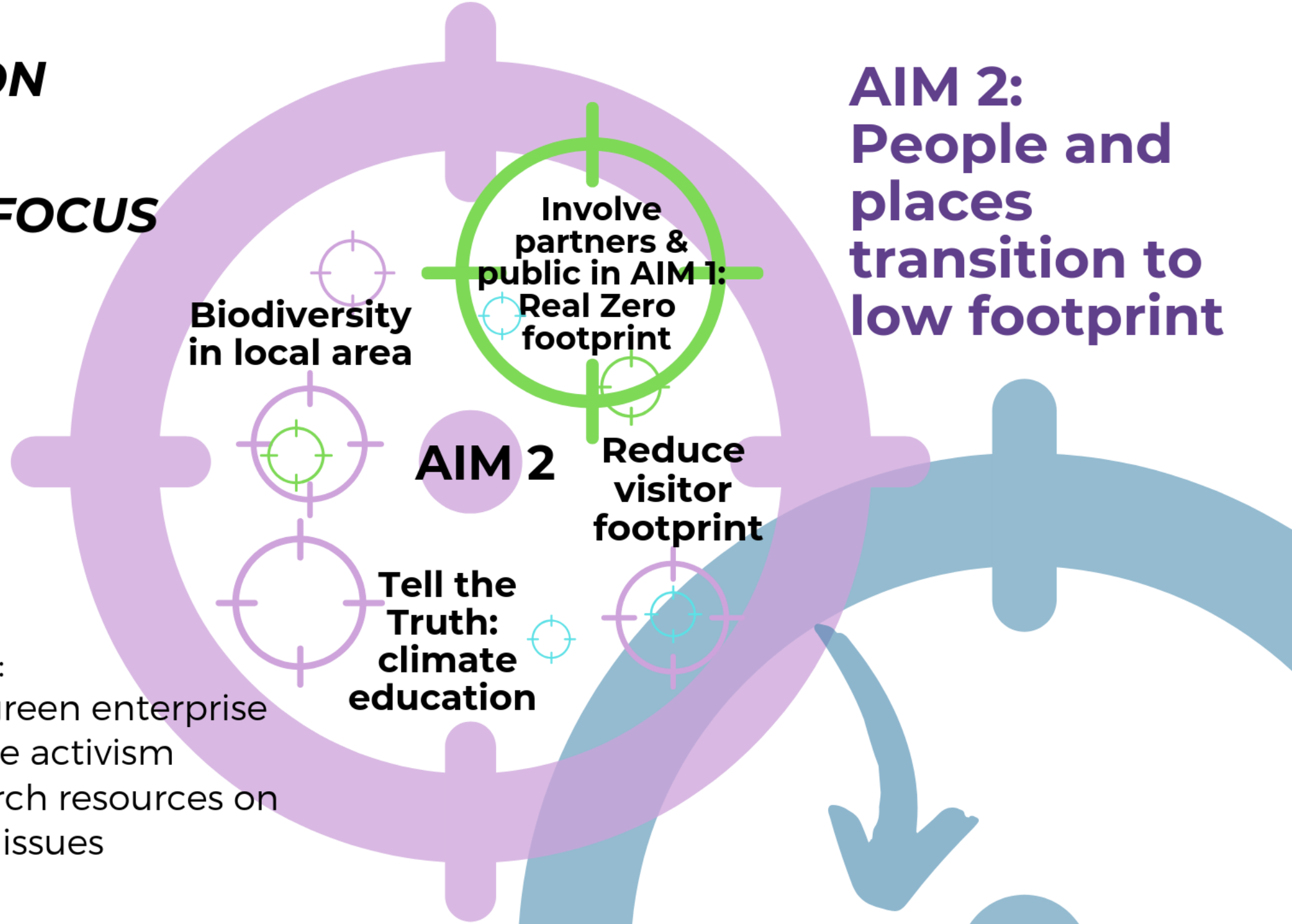
**MITIGATION
ACTIONS:
FOCUS WITHIN
ORGANISATION**

- Other sub-targets e.g.
- Buy-in from board
 - Staff education
 - Ethical funding
 - Reduce pollution...



**MITIGATION
ACTIONS:
A WIDER FOCUS**

**AIM 2:
People and
places
transition to
low footprint**

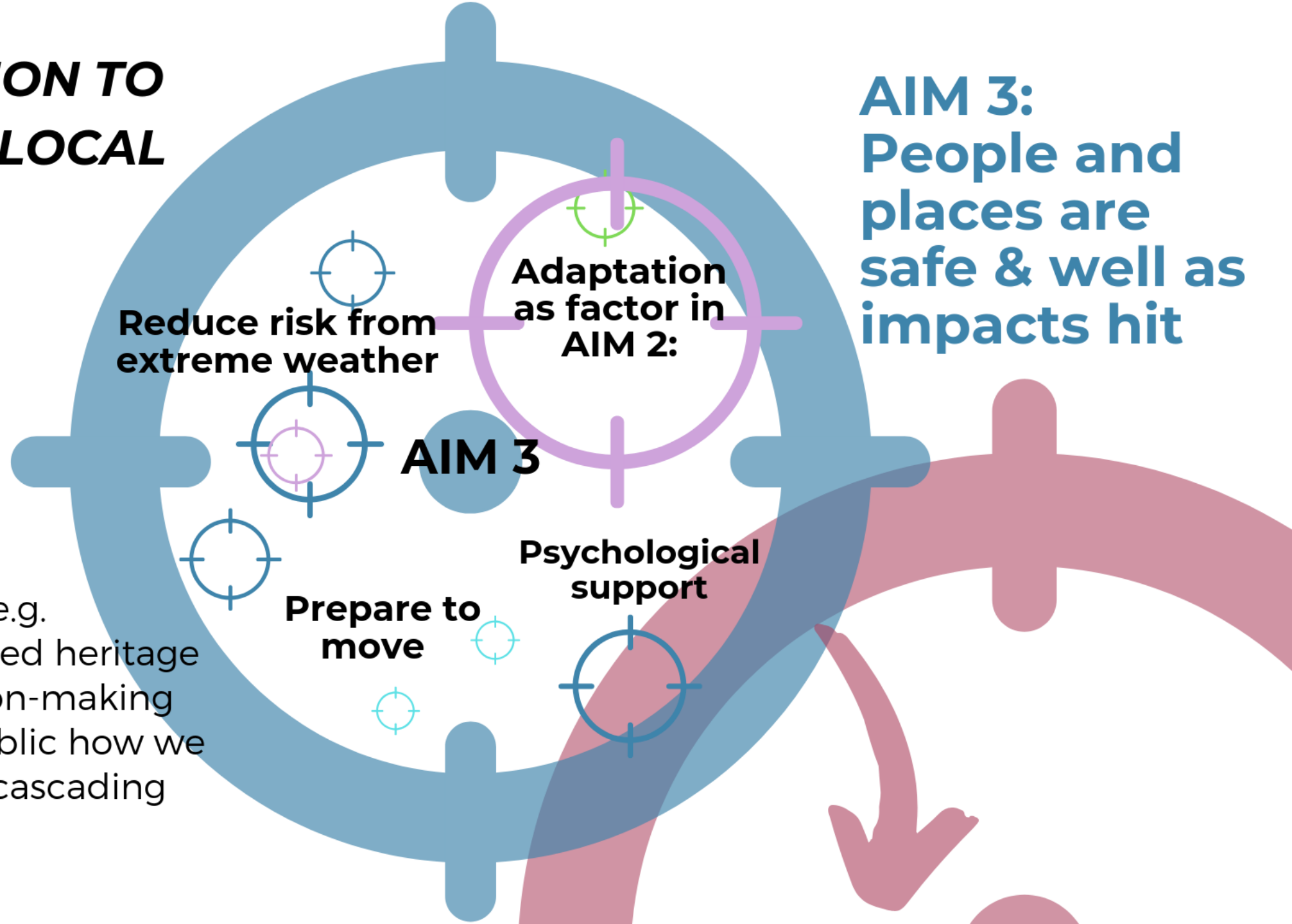


Other sub-targets:

- Support local green enterprise
- Support climate activism
- Signpost research resources on environmental issues

ADAPTATION TO IMPACTS: LOCAL FOCUS

**AIM 3:
People and
places are
safe & well as
impacts hit**

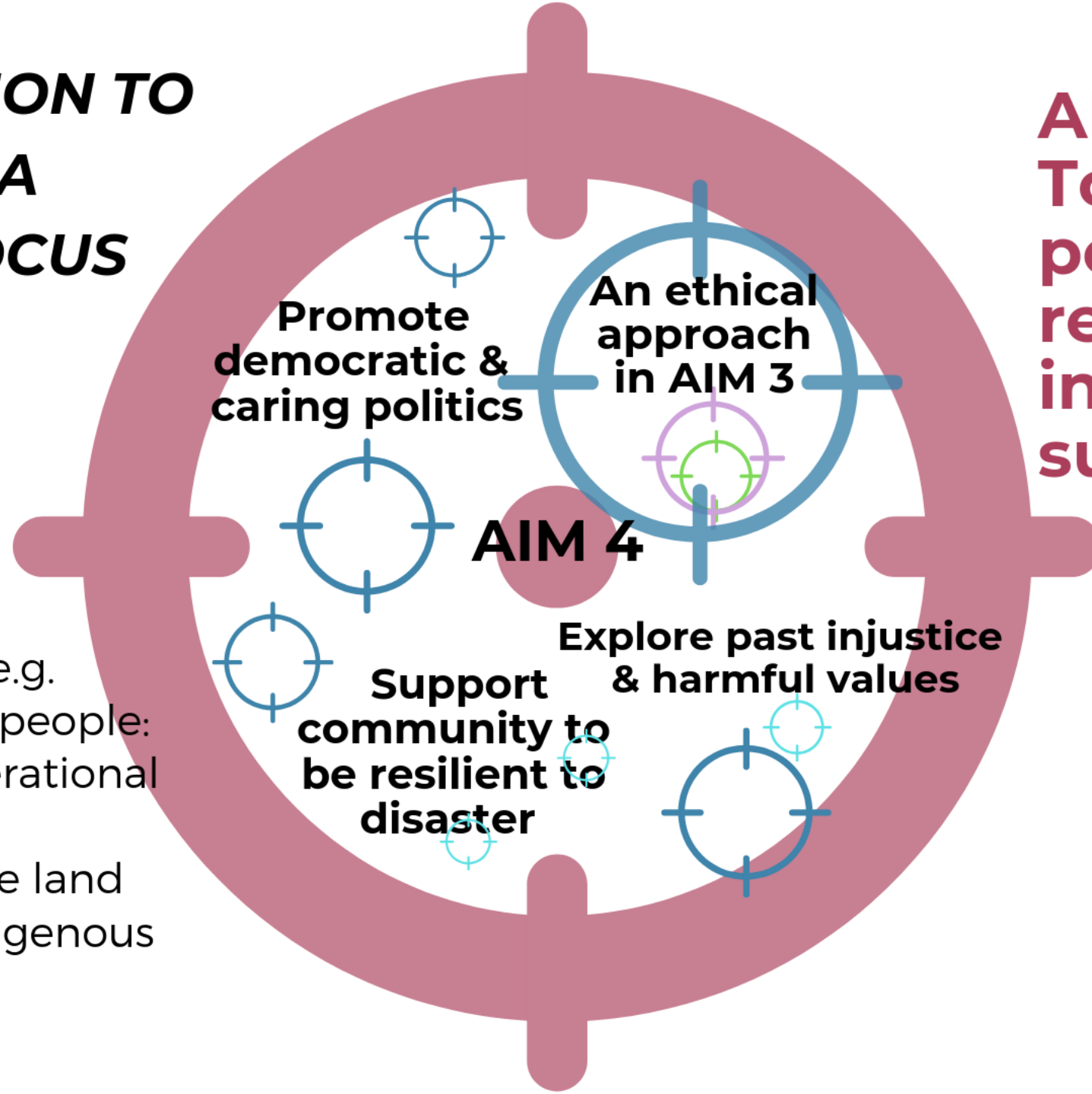


Other sub-targets e.g.

- Collect threatened heritage
- Open up decision-making
- Explore with public how we might live with cascading impacts

ADAPTATION TO IMPACTS: A WIDER FOCUS

**AIM 4:
To do all
possible to
reduce
injustice &
suffering**



Other sub-targets e.g.

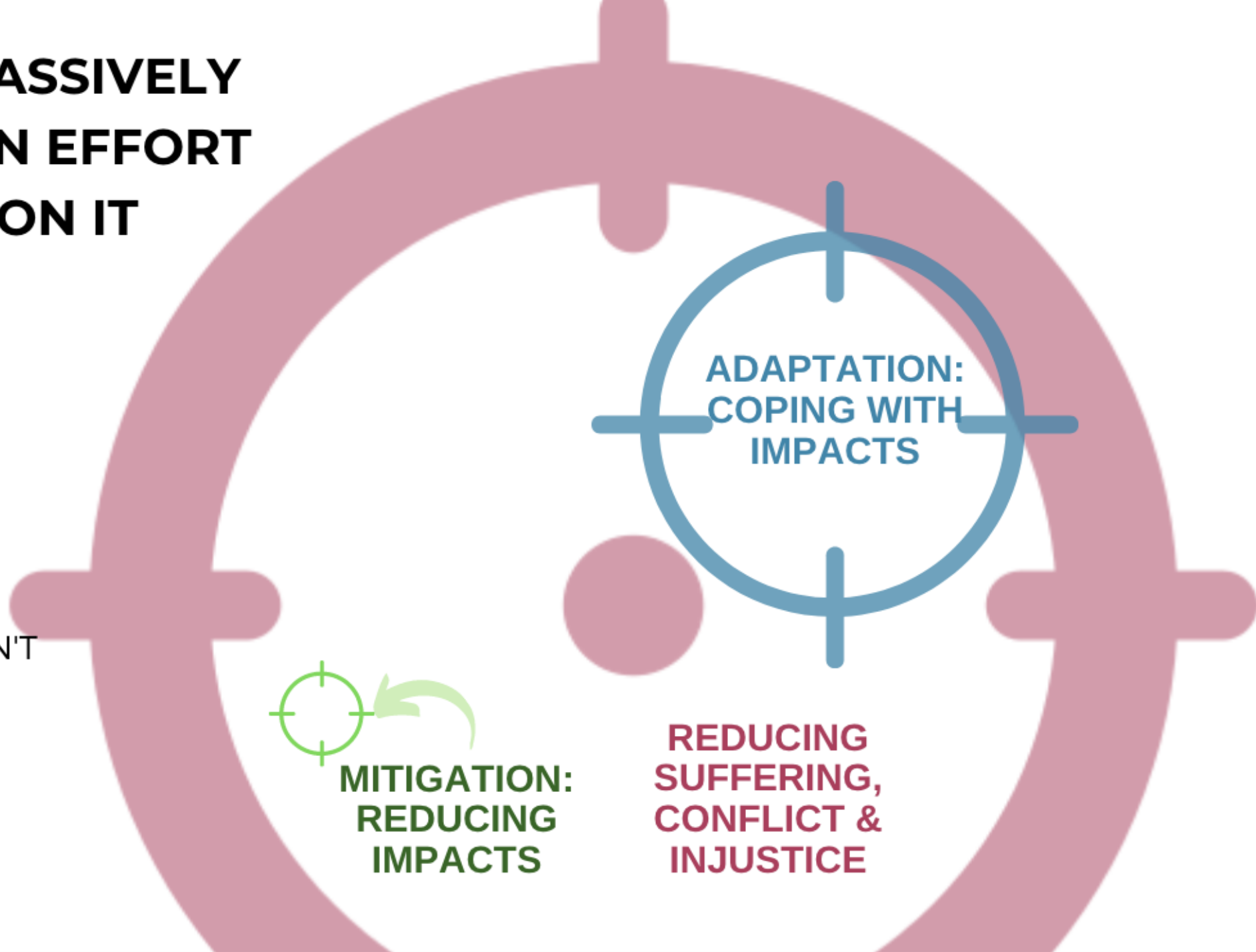
- Prioritise young people: tackle intergenerational injustice
- Support frontline land defenders & indigenous people

**EACH AIM MASSIVELY
INCREASES IN EFFORT
& IMAGINATION IT
REQUIRES**

**THIS IS THE
ONLY AIM WE
TALK ABOUT**



BECAUSE IF WE DON'T
DO
THEN
AND
ARE EVEN HARDER



We believe



that the escalating climate crisis is the defining issue of our lifetimes and that the planet is in the grip of an emergency. We know that our readers and supporters around the world care passionately about this too, as so many of you have told us

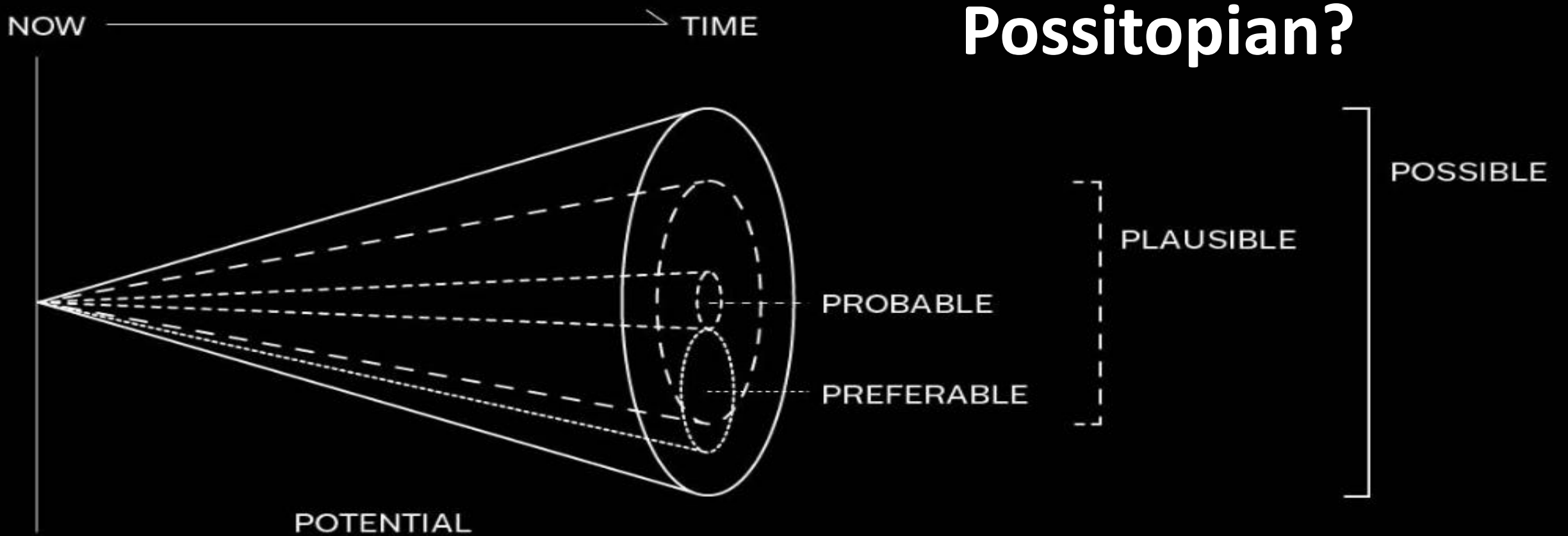
Tue 15 Oct 2019 15.00 BST



We want the Guardian to play a leading role in reporting on the environmental catastrophe. So today

The Guardian's climate crisis pledge

- We will continue our longstanding record of powerful environmental reporting, which is known around the world for its quality and independence.
- We will report on how environmental collapse is already affecting people around the world, including during natural disasters and extreme weather events.
- We will use language that recognises the severity of the crisis we're in.
- The Guardian will achieve net zero emissions by 2030.
- We will be transparent with our progress.

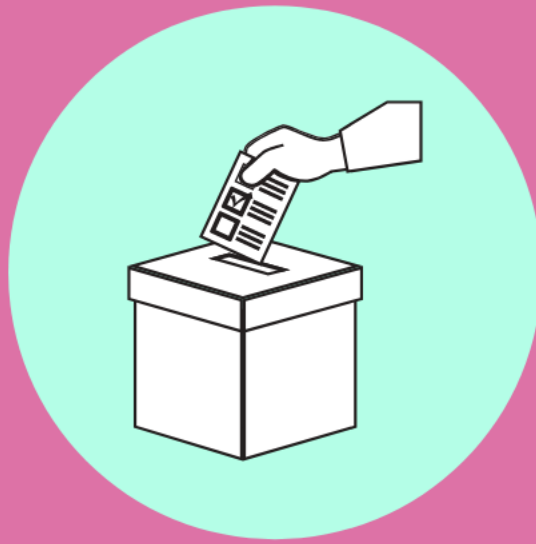


Not stuck in Utopian or Dystopian positions: Both are impossible, and people are polarised.



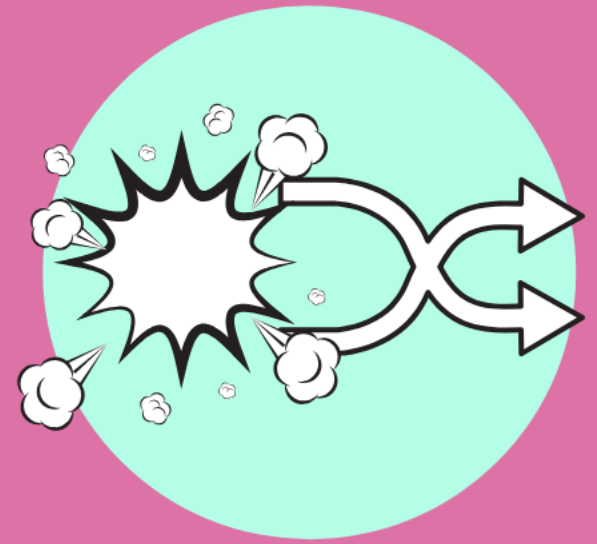
Consumer

- Consume less
- Don't be defined by what you consume
- Don't feel guilty or accuse others
- Don't stop at single actions
- Boycott harmful products



Citizen

- Learn about systems
- Speak your own truth and for the unheard
- Take non violent direct action to stop harm
- Be an ecological citizen - care for all beings



System changer

- Restore or rewild nature
- Encourage divestment
- Be an eco-entrepreneur
- Collaborate across disciplines
- Change mindsets: Tell new stories of a greener future

Three ways to be in an Emergency

Inspiring movements...



Art Not Oil coalition

Long history of Extractivism has led us here. Now, democracies are corrupted by 'pollutocrats' to enable:

- Predatory delay
- Ecocide
- Parasitic globalism
- Impossible futurism

Sponsorship gives them social license to operate

Direct action & creative protest



Pledge kitemark





Culture Declares Emergency

what is culture declares?

We are a growing global community of
arts & culture practitioners declaring a
climate & ecological emergency

We tell and face the Truth, take Action to
seek Justice in response to the
emergency



What does it offer?

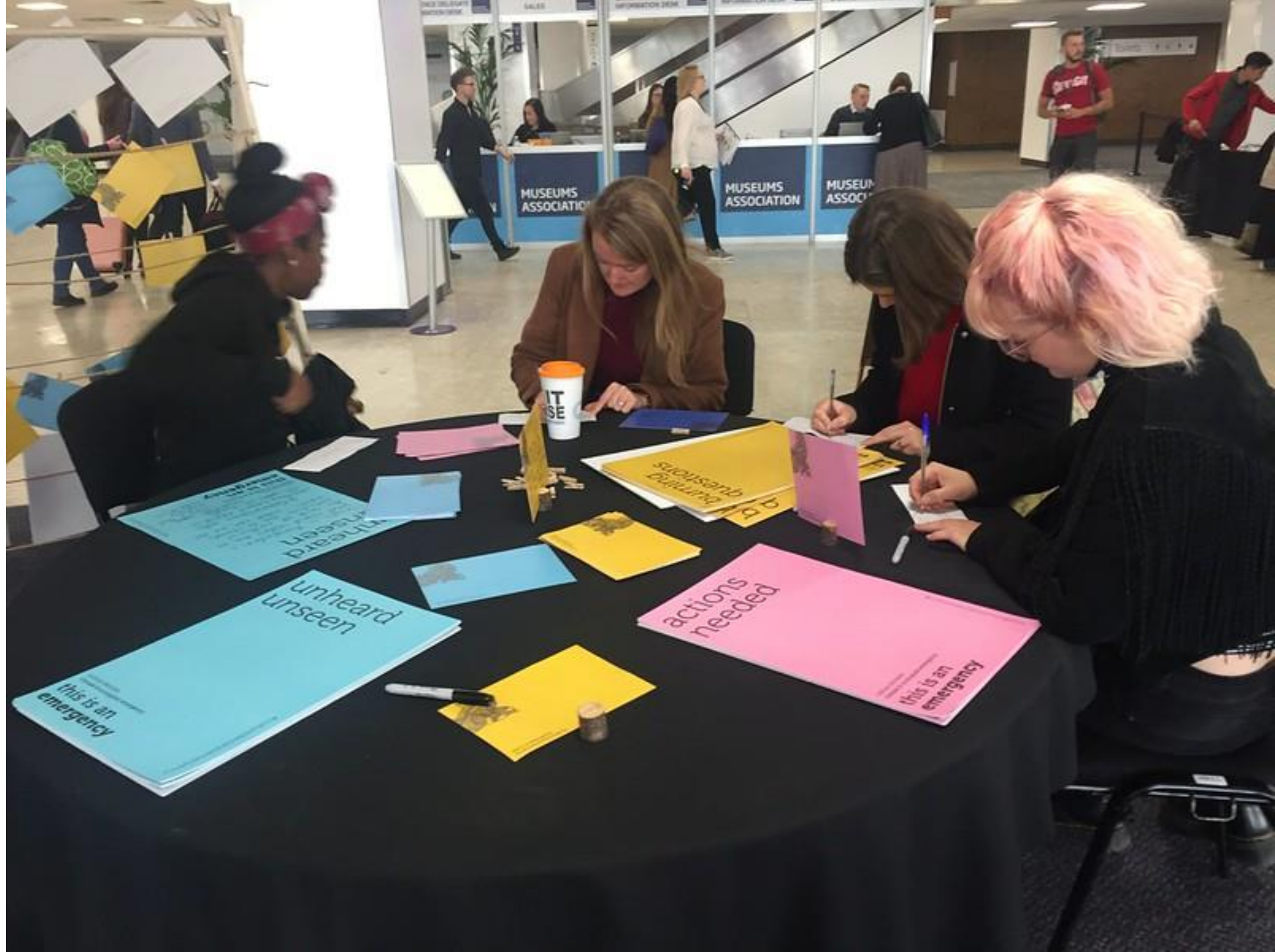
- A sign-up form and public list of declarers
- Toolkit to help you pledge, promote & take action
- Kite marks, banner, leaflets and sash designs
- Community networking, events and creative projects
- Local self-organising groups (France & Germany etc.)
- Strategic advocacy

www.culturedeclares.org @CultureDeclares

A Rally for the Imagination: Support for the Global Climate Strike



Festival of Change at Museums Association conference



Climate Heritage Network

Standards,
data sharing &
communication on Cultural
Heritage as:

- Threatened by...
- Cause of...
- Offering solutions to...
climate change



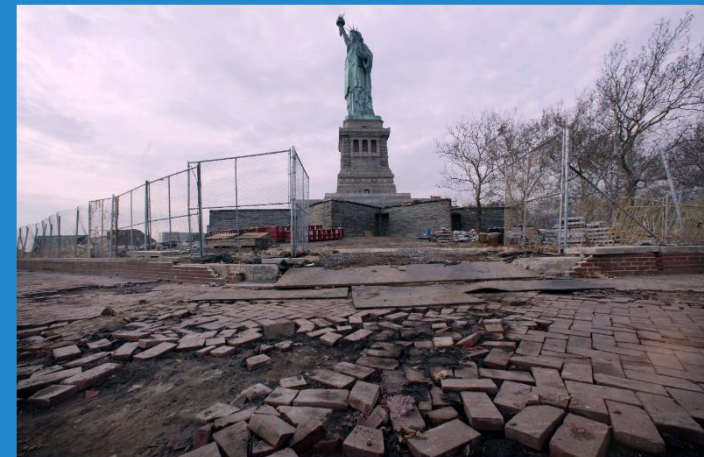
Heritage and Carbon Mitigation



Heritage and Adaptation



Planning for Loss and Damage



Heritage and Climate Science and Communication

Inspiring museums tackling the Emergency

University of Cambridge museums: Climate Hack in 2018, and now commissioning games



Supporting activism

Oxford's
Museum of
Natural History

Let's Talk About
Climate

Young people are
given skills to
speak truth to
power.



21 Sep

Have we reached the point of no return?

Delve into the evidence that human activity is changing climate and the far reaching effects it is having on people and places, both close to home and further afield.



28 Sep

Let's science the s*** out of this!

How can technology solve the climate change problem? In this session we explain both existing and potential technologies to remove and store excess carbon from the atmosphere.



5 Oct

If I ruled the world

Reduce our emissions? Store carbon dioxide? Or maybe just let the world burn? What's the solution to the climate change conundrum?



12 Oct

Biodiversity is key

Biodiversity and healthy ecosystems provide key services to humans, including mitigation (storing carbon) and protection from climate change impacts (eg. protect from flooding).



19 Oct

Blame game or game changer? Spreading the climate change word

You were born into a world where climate is changing rapidly, but it's not your fault. And even if you wanted to do something, how can one person's action change the course of ...



2 Nov

Lend me your ears, please!

Put Let's Talk About Climate to the test by presenting your climate message to friends, family, local businesses, councillors and our MP.

Putting Earth & its crisis at the core

Norwich Castle Museum
has integrated the
environment into all its
policies & activities



ClimateMuseumUK

@ClimateMuseumUK

Following

What if your Sustainability Committee or Environmental Policy Group was renamed an Emergency Response group? Would it change its agenda and who takes part?
[@CultureDeclares](#) [#ClimateHeritage](#)
[#Museums4Climate](#)

10:32 AM - 13 Sep 2019

5 Retweets 12 Likes



Helping people deal with climate emotions

VarldsKulturMuseerna,
Gothenburg

Human Nature: *About
consumption and the
future of the planet*



...educating about planetary systems



Refuse Fossil Fuel Sponsorship

ONCA in
Brighton is oil
sponsorship
free

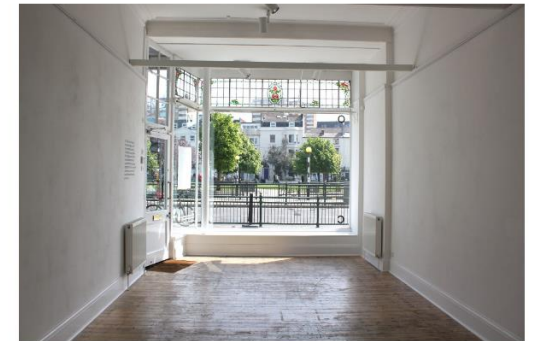


O N C A BARGE



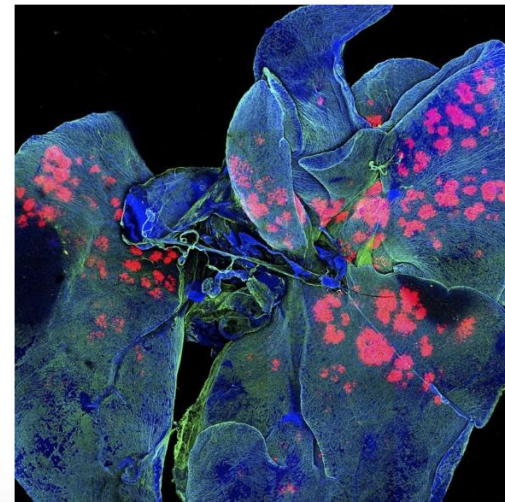
ABOUT US

Creating Space for Change



O N C A GALLERY

Hire our Space



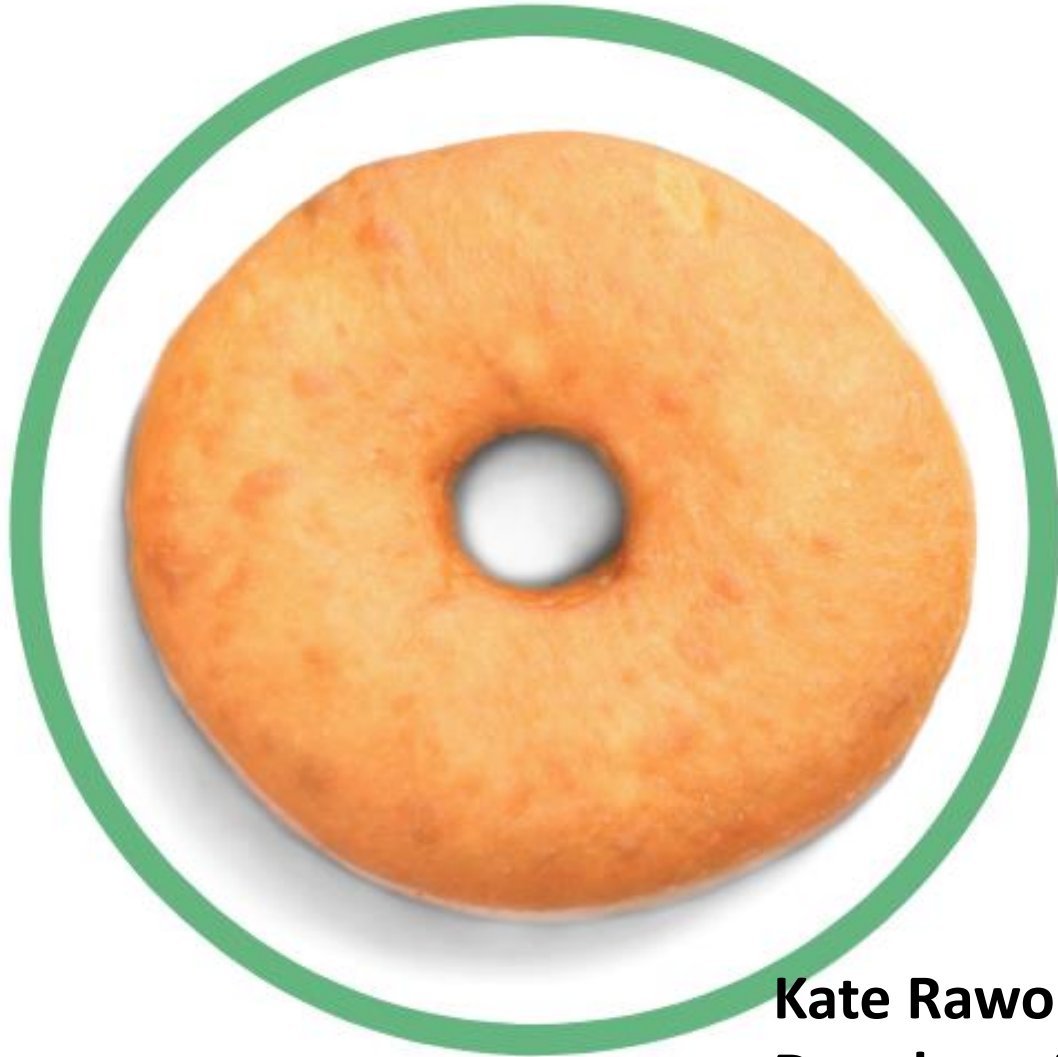
Be eco-centric: Grow care for all beings

Bristol Museum has put funeral shrouds on extinct or endangered species

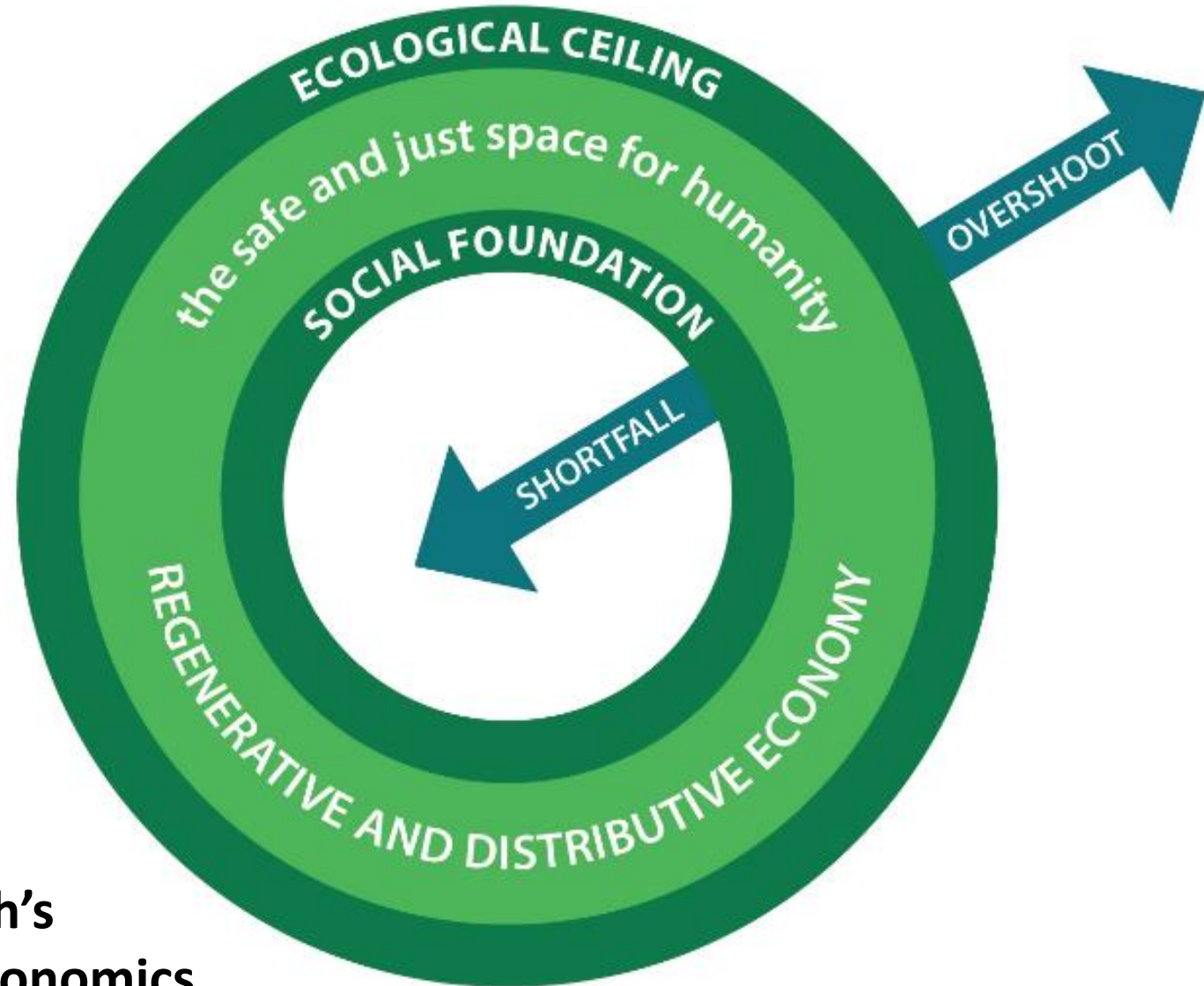
*Curator in image:
Rhian Rowson*



Place social wellbeing within ecological limits



Kate Raworth's
Doughnut Economics



The Happy Museum Project looks at how the museum sector can respond to the challenge of creating a more sustainable future.

It supports museum practice that places wellbeing within an environmental and future-facing frame, rethinking the role that museums can play in creating more resilient people, places and planet. Through action research, academic research, peer networking and training it supports institutional and community wellbeing and resilience in the face of global challenges.

‘Our own happiness is short-lived if we achieve wellbeing for our generation at the environmental expense of future generations.’

Happy Museum Project

Can a museum be a First Responder to the Emergency?

In 2018, I decided to set up a museum to test the idea.



Climate Museum UK is a mobile & digital museum stirring and collecting responses to the Climate & Ecological Emergency

Framing climate in histories of colonialism, racism & patriarchy. Including other species in definitions of community.



INTERSECTIONAL

"The first rule of Climate Museum UK is *talk* about climate change"

Not stuck in either Utopian or Dystopian views of the future. An expanded view of all possibilities.



POSSITOPIAN

A key aim is to support cultural & civic workers to help their communities grasp and tackle climate change

Offering support for people to talk about feelings and experiences as things change. Increasing care for one another.



COMPASSIONATE

The environment is not a single issue, separate from others. It's the whole living planet and all its inhabitants...in crisis.



HOLISTIC

Avoiding harm and waste in our activities. Refusing fossil fuel funding.



PLANET-KIND

What do you want us to be?



CONSULTATIVE

Our pop-up museum is a kit of 'loose parts': Games, curious objects & activities, adapting to fit different interests and needs.



SOME OF THE 25 TOOLS

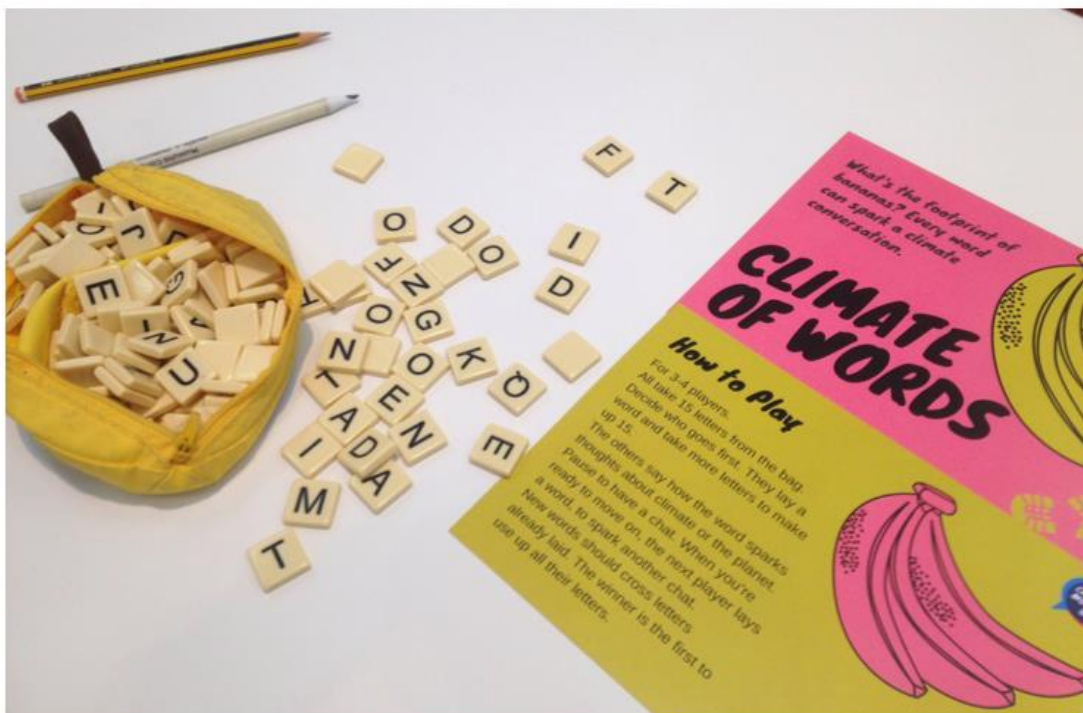
We pop up for workshops and longer exhibitions

Workshop tools or games. Library.

Artworks.

Ephemera.

Creative materials.





Our first exhibition



CLIMATE MUSEUM UK PRESENTS...

CLIMATE TALKS

ART AND PLAYFUL WAYS TO
TALK ABOUT THE CLIMATE
EMERGENCY



ONCA GALLERY

FOR MORE INFO: CLIMATEMUSEUMUK.ORG

14, STONES PLACE
BRIGHTON
BN1 4GB

2-6 OCTOBER 2019

12-6 PM

CLOSING 4 PM SUNDAY 6TH



Being a First Responder museum

- Recognise the **truth of the Emergency!**
- Do more **Anticipatory work**, more often, rigorously and imaginatively and more with your public. Be **Possitopian**
- Environmental work is all-encompassing: it needs us to have an **expanded perspective**
- **Use your assets:** collections & histories can show beneficial connections between humans & ecosystems, and where this has gone wrong

Being a First Responder museum

- Apply the **Precautionary Principle**: ask, can we be sure this activity won't cause harm in future?
- Transform Learning programmes: from giving skills to continue 'Business as Usual' towards wisdom needed to continue **thrivability of the living planet**.
- Promote **ecological enterprise** & innovation as a way for the museum to thrive.
- **Aim to act across the spectrum of:** Mitigation, Adaptation and to Reduce Suffering

Finally...

Don't go it alone

Inspire others

Form and join movements

Connect across disciplines and divides



More about me

aboutbridgetmckenzie.wordpress.com
@bridgetmck

And my three hats:

climatemuseumuk.org
@ClimateMuseumUK

culturedeclares.org
@CultureDeclares

flowassociates.com
@flowassociates



Flow